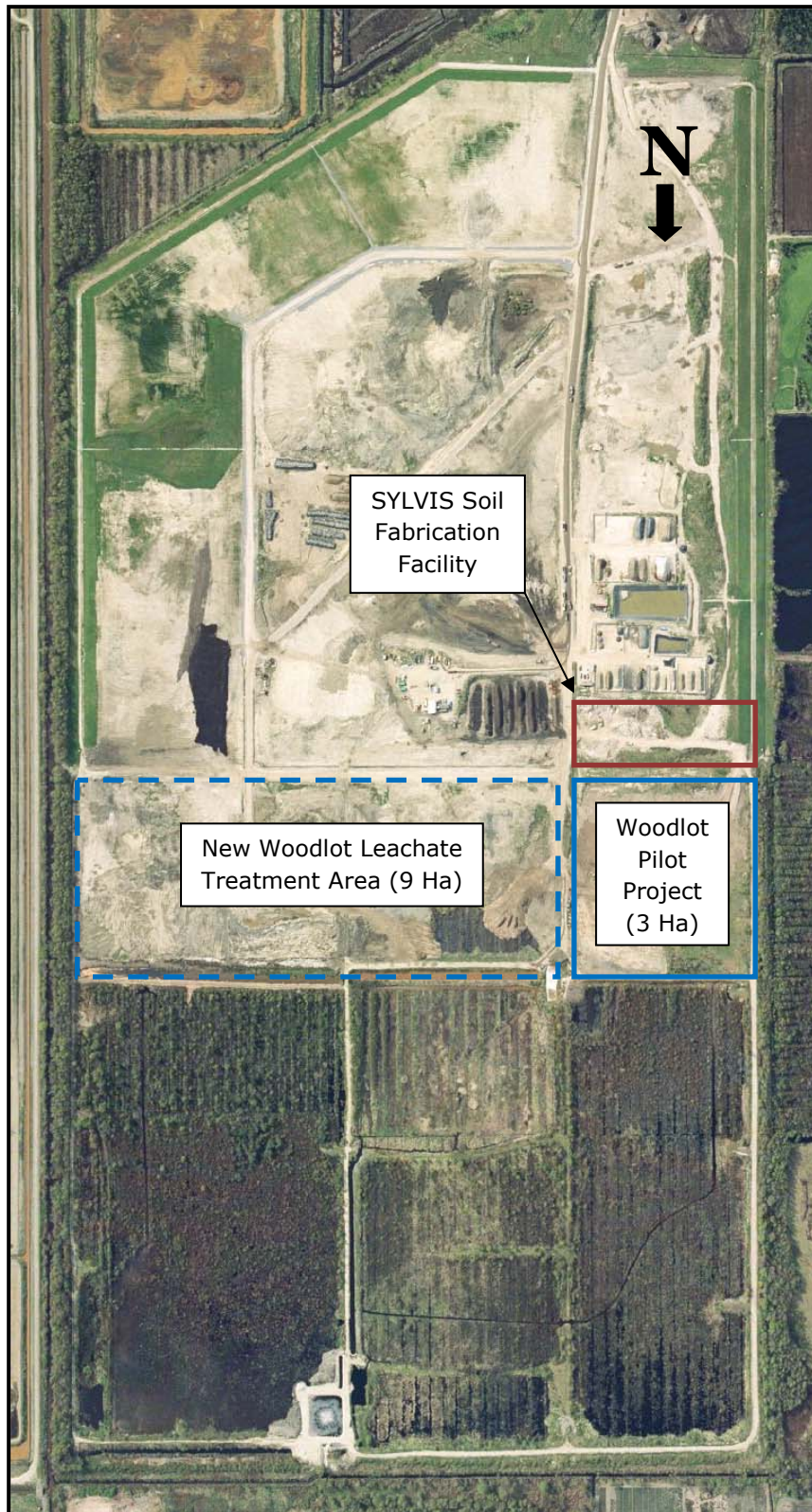


SYLVIS Soil Fabrication Facility at Ecowaste Landfill



Fast Facts

225 Number of hectares (size) of the Ecowaste Landfill.

3 Number of hectares in the leachate treatment woodlot pilot project.

9 Number of hectares in the leachate treatment area expansion.

3,600 Number of bulk tonnes of biosolids that were used in the soil mixing process for the woodlot pilot project.

30,356 Number of cubic meters of soil that was fabricated for the woodlot pilot project.

16,000 Number of bulk tonnes of biosolids that will be mixed in 2008.

60,000 Number of cubic meters of soil to be fabricated in 2008.

107 Daily volume in cubic meters of leachate that can be applied per day in 2009.



SYLVIS Environmental

427 Seventh Street, New Westminster, BC, V3M 3L2

Toll free: 1.800.778.1377 • www.sylvis.com

Photosheet 1

Soil Fabrication



Figure 1: Wheel loader adds feedstock ingredients to the SYLVIS soil mixer based upon a volumetric ratio.

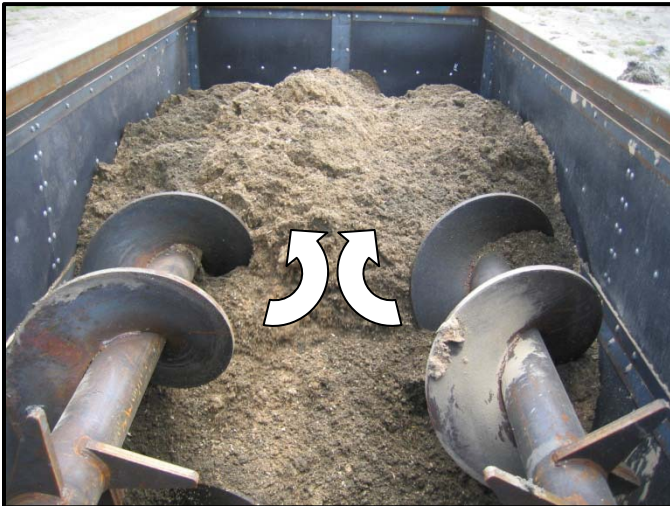


Figure 2: Four horizontal augers in the mixer tub turn counter to each other, blending the feedstock ingredients together.



Figure 3: The soil mixer conveyor releases the newly fabricated soil into the stockpile area below.



SYLVIS Environmental

427 Seventh Street, New Westminster, BC, V3M 3L2

Toll free: 1.800.778.1377 • www.sylvis.com

Photosheet 2

Poplar Plantation and Environmental Monitoring



Figure 1: Hybrid poplar stecklings were used for planting the woodlot pilot project.



Figure 2: A vacuum pump applies suction to soil lysimeter probes buried in the soil, drawing soil water for analysis.



Figure 3: The trees are spaced 14' apart and protected from browse with tree socks. The woodlot is irrigated with leachate by impact sprinklers on a schedule set weekly.



SYLVIS Environmental

427 Seventh Street, New Westminster, BC, V3M 3L2

Toll free: 1.800.778.1377 • www.sylvis.com